

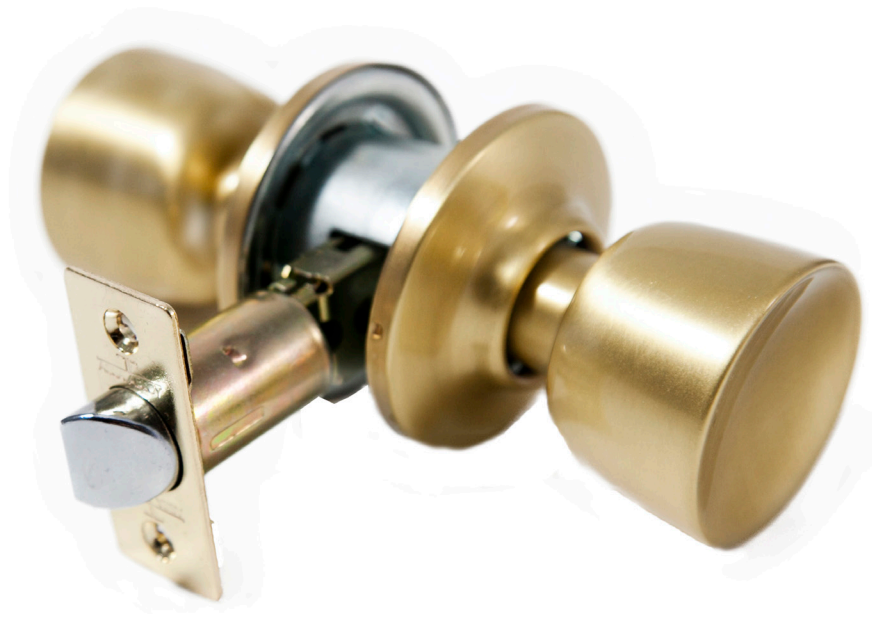
Knobsets

TESA

ASSA ABLOY



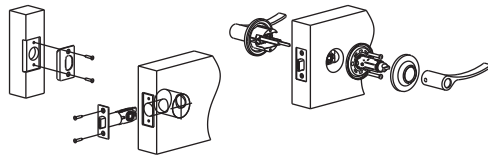
Specialists and leaders in knobsets



More than 60 years manufacturing locksets have made of [TESA](#) an unavoidable reference in the market for the most widely spread type of lock in the world: the lockset, a very simple, easy-to-install product with endless possibilities.

Easy to install

TESA's lockset is a very easy to install product. In 3 steps we can equip the door and have it perfectly ready to operate.



Wide range of functions and finishes

With a 40-year experience in the manufacturing of locksets, TESA can offer you the widest range of finishes and functions required in every case. Free passage doors, doors that require privacy, doors to be controlled with a key, pull handles and many others have proven to meet the market's demands while being at the same time subject to the requisites of each finish. Brass, chrome, nickel, black, white finishes... all of them carefully conceived to last many years.



Masterkeyings and security cylinders

Do you want control, comfort and security in one lockset?

Don't hesitate to choose a masterkeying with our dimple key security cylinders. A masterkeying will allow you to open more than one door, restrict the access of certain users to certain doors and rely on the security that you need, using a very limited number of keys (or even just one, if necessary).



Replacement

The great advantage of locksets is the possibility of changing and updating the aesthetics of the door as well as the finish or the function installed in it with no need to mechanize the door again; just replacing the lock with a new one will be enough.



Certified products

TESA's lockset is not only a simple, easy-to-install product; it's also highly resistant, with a very lasting fixing. This is borne out by the meeting of the ANSI and UL standards, which are proof of the high level of resistance and durability of the product even in cases of fire.



Guaranteed by TESA

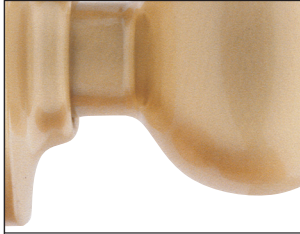
To buy TESA is a quality guarantee. TESA's lockset is a totally reliable product, whose manufacturing and design provide the maximum guarantee of quality and environmental awareness, accredited by the ISO 9001 and ISO 14001 certifications and the Security at Work and Occupational Hazard Prevention standard.



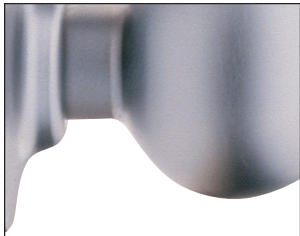
Finish index



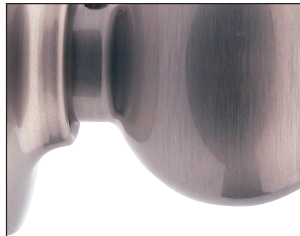
Polished brass
LP



Satin brass
LM



Satin chrome
CM



Satin nickel
NS



White
BL

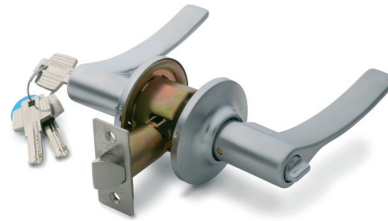


Black
NE

Index

Contents

Key-in-lever locksets	6
Functions	7
Hand model	8
3B Bcelona series	8
3900 Bola series	8
3500 Tulipa series	9
Decorative escutcheons	11
Latches and strikes	11
Key-in-lever latch	11
Strikes	11



Key-in-lever locksets



Decorative escutcheon

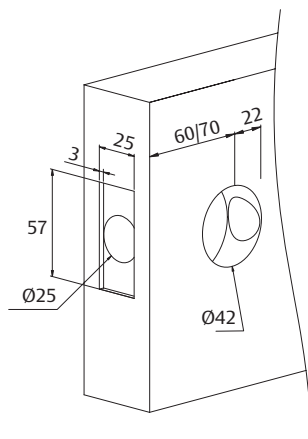


Latches and strikes

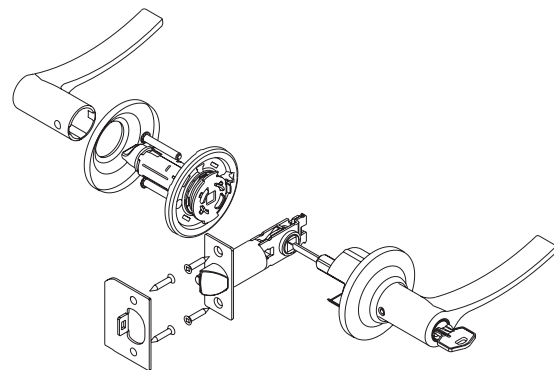
Key-in-lever locksets

Squaring the advantages

- » Multifunctional mechanism for knob or lever, with high component robustness and soft operation.
- » High-end commercial and residential applications.



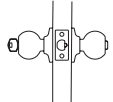
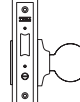
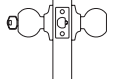
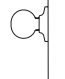
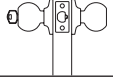

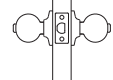
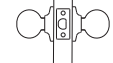
Dimensions in mm



Features	Standard	Special
Technical features	Anti-thrust security pin for functions 0, 1 and 2.	
Anti-corrosion resistance ASTM B117/90	CM,NS144 hours LP,LM 96 hours	
Espesor puerta	33-45 mm for handles 33-52 mm for knobs	
ANSI A156.2	Grade 2: 400.000 cycles	
Cylinder	TE5, 5 pin cylinder with 3 keys	Security Cylinder: TD5, TD60, T60, T80, TX80, TK6 Masterkeying and keyed alike
Latch	60/70 Adjustable backset. Latchbolt projection 12,5 mm	
Accessories	Strike, screws, instructions and assembly template.	
Packaging units	20	
Reversibility	All knobsets are reversible - Beware with the hands of some handles	

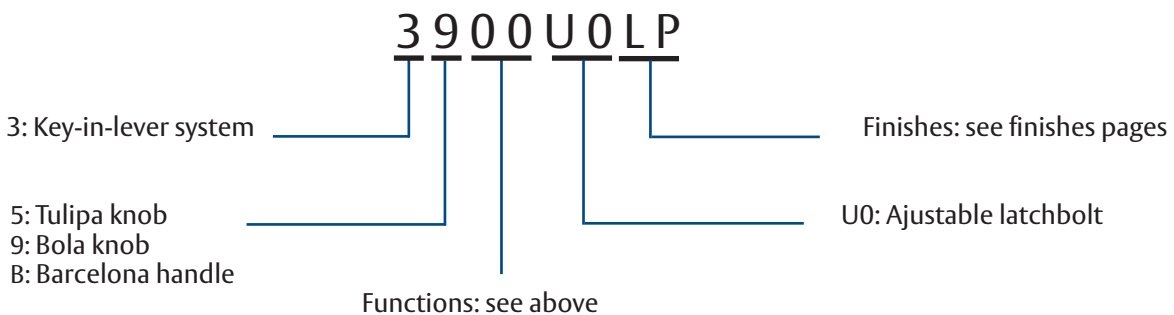
Key-in-lever locksets

Functions

Function	Description	Function	Description
	00 ENTRANCE LOCK: both sides are locked and unlocked by outside key or inside turn-button.		20 ENTRANCE LOCK: both sides are locked and unlocked by outside key or inside knob. Mortise lock. Applicable with electric strike.
	01 ENTRANCE LOCK: locked and unlocked only by outside key. If locked, inside knob/lever is not active.		31 SINGLE DUMMY TRIM: screw attachment from inside of the door.
	02 STOREROOM LOCK: outside fixed, entrance by key only. Inside always unlocked.		34 ENTRANCE LOCK: always unlocked. Applicable to mortise locks.
	03 BED AND BATHROOM LOCKS: both sides are locked and unlocked by the inside turn-button. Emergency release outside.		
	05 PASSAGE LOCK: both sides always unlocked.		




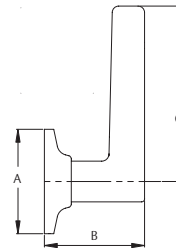
Code interpretation









Key-in-lever locksets

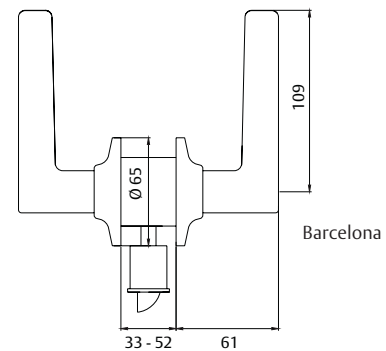
Handle model

Model	A	B	C	3B Barcelona
Barcelona	65	62	109	













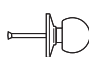



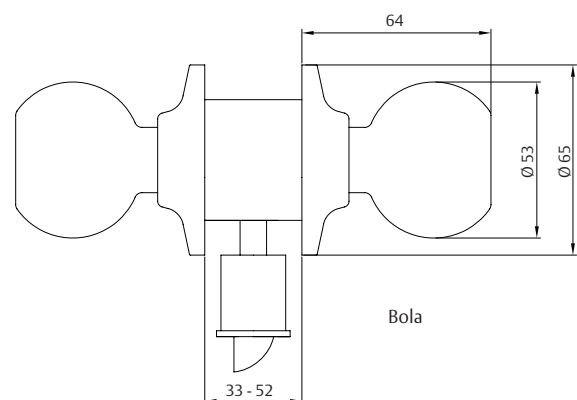
3B Barcelona series

Entrance	Function	Backset	Finish	Packging	
		3B00	U0	CM - LM - LP - NS BL - NE	20
Bathroom	Function	Backset	Finish	Packging	
		3B03	U0	CM - LM - LP - NS BL - NE	20
Passage	Function	Backset	Finish	Packging	
		3B05	U0	CM - LM - LP - NS BL - NE	20



39 Bola series

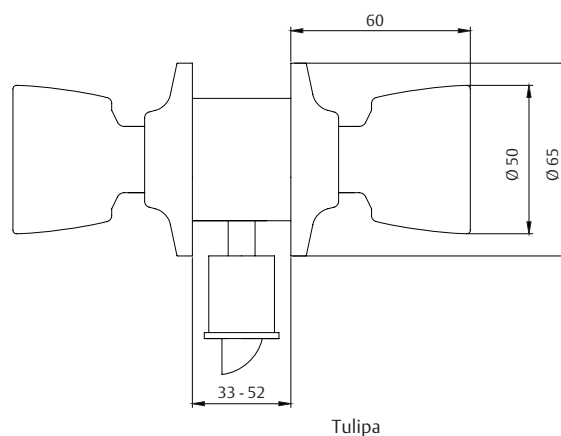
Entrance	Function	Backset	Finish	Packging	
		3900	U0 UV	CM - LM - LP - NS BL - NE	20
Entrance	Function	Backset	Finish	Packging	
		3901	U0	CM - LM - LP - NS BL - NE	20
Storeroom	Function	Backset	Finish	Packging	
		3902	U0	CM - LM - LP - NS BL - NE	20
Bathroom	Function	Backset	Finish	Packging	
		3903	U0 UV	CM - LM - LP - NS BL - NE	20
Passage	Function	Backset	Finish	Packging	
		3905	U0 UV	CM - LM - LP - NS BL - NE	20
Entrance	Function	Backset	Finish	Packging	
		3920	50	CM - LM - LP - NS BL - NE	20
Single pull knob	Function	Backset	Finish	Packging	
	3931	00	CM - LM - LP - NS BL - NE	20	
Single sq.spindle	Function	Backset	Finish	Packging	
	3934	00	CM - LM - LP - NS BL - NE	20	



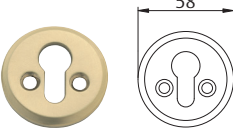
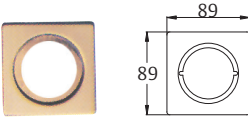
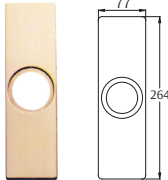
Key-in-lever locksets

35 Tulipa series

Entrance	Function	Backset	Finish	Packging
	3500	U0 UV	CM - LM - LP NS - BL - NE	20
Entrance	Function	Backset	Finish	Packging
	3501	U0	CM - LM - LP - NS BL - NE	20
Storeroom	Function	Backset	Finish	Packging
	3502	U0	CM - LM - LP - NS BL - NE	20
Bathroom	Function	Backset	Finish	Packging
	3503	U0 UV	CM - LM - LP - NS BL - NE	20
Passage	Function	Backset	Finish	Packging
	3505	U0 UV	CM - LM - LP - NS BL - NE	20
Entrance	Function	Backset	Finish	Packging
	3520	U0	CM - LM - LP - NS BL - NE	20
Single Pull knob	Function	Backset	Finish	Packging
	3531	U0	CM - LM - LP - NS BL - NE	20
Single sq.spindle	Function	Backset	Finish	Packging
	3534	U0	CM - LM - LP - NS BL - NE	20



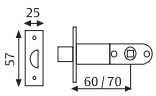
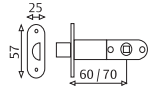
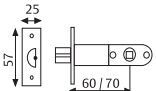
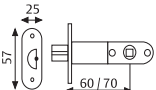
Decorative escutcheons

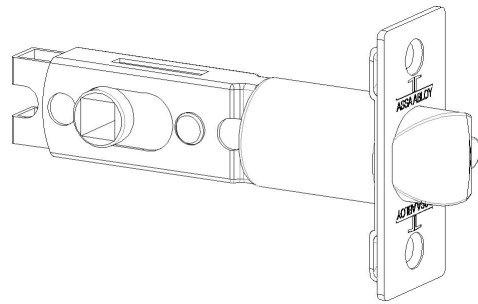
461 / 45 Model	Finish	Packging	452 / 90 Model	Finish	Packging
	CM - CR - LM - LP NS - LN	10		CM - LM - LP	10
453 / 26 Model	Finish	Packging			
	CM - LM - LP	10			

* Keyholes are not performed.

Latches and strikes

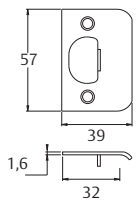
Key-in-lever latch

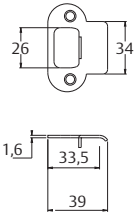
Standard	Model	Finishes	Size	Packging
	P030U0	LP - CR	60/70	200
	P030Z0	LP - CR	127	100
1/2 rounded	Model	Finishes	Size	Packging
	P030U2	LP - CR	60/70	200
Security device	Model	Finishes	Size	Packging
	P031U0	LP - CR	60/70	200
	P031Z0	LP - CR	127	100
Security device and 1/2 rounded	Model	Finishes	Size	Packging
	P031U2	LP - CR	60/70	200

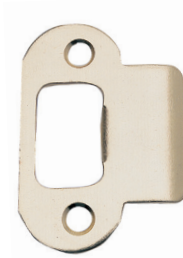


E

Strikes

Standard	Model	Finishes	Packging
	C2500	HL	800
	C2500	HN	800

1/2 rounded	Model	Finishes	Packging
	CR25 / 34	HL	1000
	CR25 / 34	HN	1000





ASSA ABLOY

Talleres de Escoriaza, S.A.U.
Barrio Ventas, 35 • E-20305 Irun • SPAIN
Tel.: +34 943 669 100 • Fax: +34 943 622 189
www.tesa.es

ASSA ABLOY is the global leader in door opening solutions,
dedicated to satisfying end-user needs for security, safety and convenience